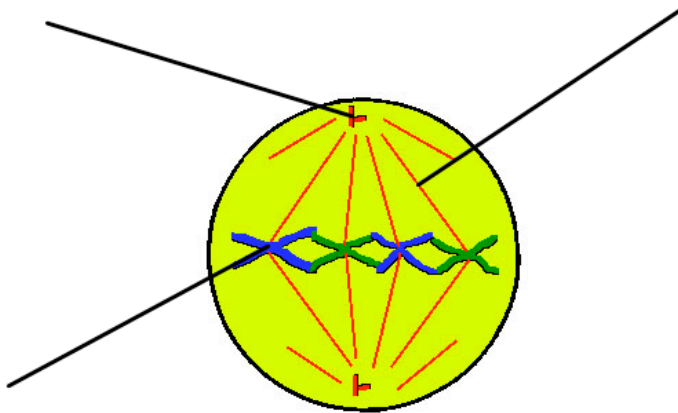


www.biology.iupui.edu

What phase is this?
 Why is this important?
 What is occurring?
 Are the chromosomes identical?



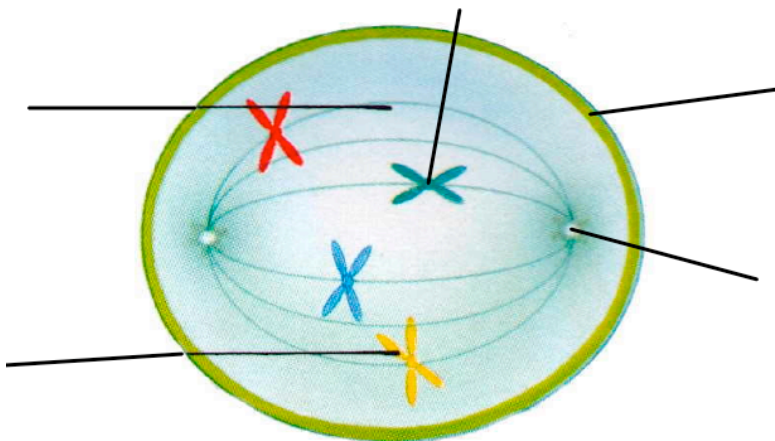
<http://www.uic.edu>

What Phase of Mitosis is this?

Label the structures that are indicated.

Word Bank

centriole spindle fiber chromosom



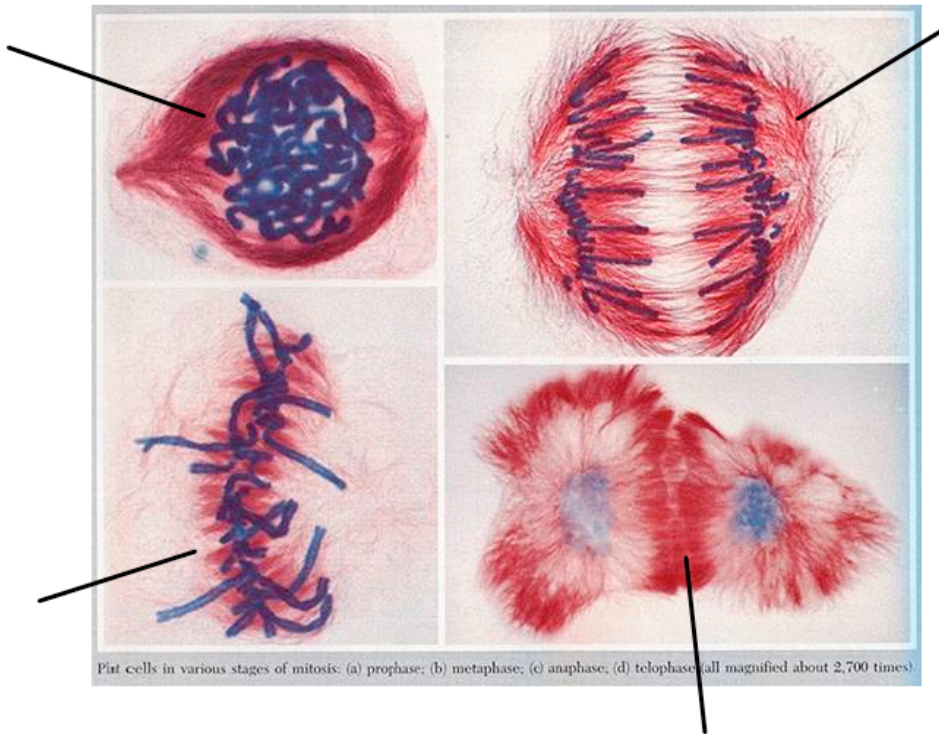
<http://aristotle4.blogspot.com>

What phase of mitosis is this?

Label the indicated structures. Use the following Word Bank.

Word Bank

chromosome centriole
 cell membrane centromere
 spindle fiber



Label each phase of Mitosis.

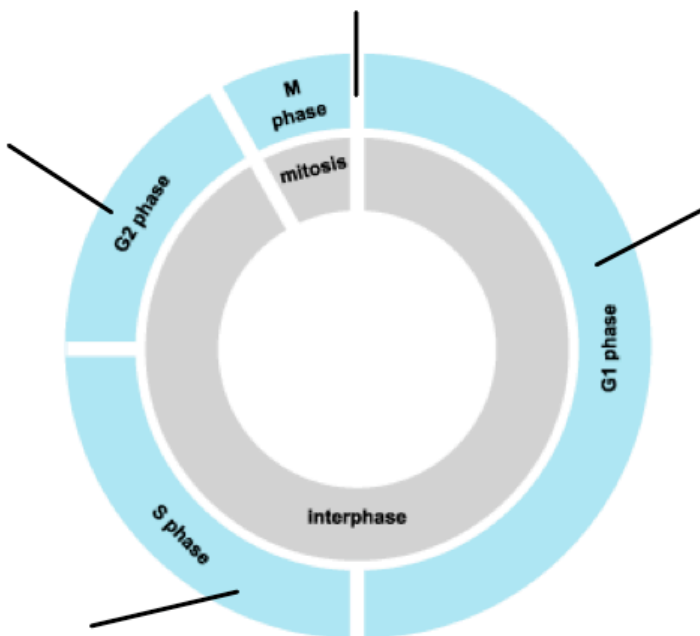
Metaphase

Anaphase

Telophase

Prophase

<http://www.ndpteachers.org/perit/Mitosis>



Use the Word Bank to label the cell cycle diagram.

Word Bank

DNA Replication

Cytokinesis

Cell Growth

Preparation for mitosis

<http://www.answers.com/topic/cell-cycle>



<http://cmcweb.lr.k12.nj.us>

What is this structure?

Label the two parts of this structure as either a centromere or a chromatid

1.



2.



Place these phases in the correct order

3.



4.



Vocabulary

Match each term with the appropriate definition.

Division of the cell nucleus, occurs during M phase of the cell cycle

Centromere

Process in which the cytoplasm divides

Mitosis

Series of events that the cells goes through to grow and divide

Cell Cycle

Chromosomes line up in the middle of the cell in this phase

Cytokinesis

Attaches two chromatids together, spindle fiber attaches to this

Metaphase